



# HEA Forward- Look Forum

---

Re-casting the Sustainability  
Debate: Positioning Irish  
Higher Education as a Driver  
of Sustainable Social, Cultural  
and Economic Development

9am–5.30pm, Friday 30<sup>th</sup> May 2014

George's Hall, Dublin Castle

It is not the purpose...to point fingers or surmise how we came to find ourselves clinging to the edge of a crumbling economy. Rather, it is our entirely constructive aim to offer a means of pulling ourselves up and moving forward...The State University of New York is designating itself as a thought-leader on this front, driving the national conversation about higher education's role in revitalizing the country's economy.

Nancy Zimpher, Chancellor, State University of New York (2012).

---

The HEA Forward-Look Forum series will provide opportunities for the Irish higher education community to come together and engage in forward-looking and disruptive thinking about the future of the sector that is fully cognisant of the global context within which Irish higher education operates.

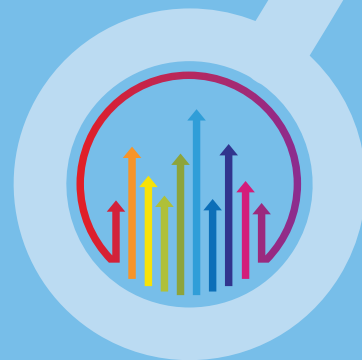
The inaugural Forum, 'Re-casting the Sustainability Debate: Positioning Irish Higher Education as a Driver of Sustainable Social, Cultural and Economic Development', will bring together representatives from the State University of New York (SUNY), the leadership of Irish higher education, and industry, as well as policy-makers and student-representatives to share knowledge and experience of positioning higher education as a driver of the economy. It will also provide an opportunity for open dialogue about the challenges of measuring and communicating the contribution of higher education to wider society. With an address from Professor Nancy Zimpher, Chancellor of SUNY, and contributions from other key stakeholders, the Forum will facilitate free-ranging discussion and debate amongst all participants.

# HEA Forward-Look Forum

9am–5.30pm, Friday 30<sup>th</sup> May 2014

George's Hall, Dublin Castle

## Programme



9.00 Registration and Refreshments

9.30 Opening Remarks: **John Hennessy** (Chairman, Higher Education Authority)

### 9.45 POSITIONING HIGHER EDUCATION AS A DRIVER OF THE ECONOMY

**Mary Doyle** (Deputy Secretary, Department of Education and Skills)

**Professor Nancy Zimpher** (Chancellor, State University of New York)

*This session will facilitate discussion about how higher education will contribute to addressing national socio-economic challenges over the next 10 years.*

---

11.30 Break

---

### 12.00 MEASURING HIGHER EDUCATION'S CONTRIBUTION

**Chair: Tom Boland** (Chief Executive, Higher Education Authority)

**Professor Brian MacCraith** (President, Dublin City University)

**Dr. Deborah F. Stanley** (President, State University of New York at Oswego)

*This session will examine the different ways to measure and demonstrate higher education's contribution to society and the economy—in the short-term, medium-term, and long-term.*

---

1.30 Lunch (*Round Room*)

---

### 2.30 CULTIVATING AN ENHANCED PUBLIC AND POLICY RESPONSE: IMPLICATIONS FOR SUNY AND IRELAND

**Muiris O'Connor** (Head of Policy and Strategic Planning, Higher Education Authority)

**Dr. Jason E. Lane** (Vice-Provost for Academic Affairs and Senior Associate Vice-Chancellor, State University of New York)

*This session will facilitate discussion about enhancing public and political support for higher education.*

4.00 Closing Remarks: **Professor Ellen Hazelkorn** (Policy Advisor, Higher Education Authority)

4.30 Reception (*Round Room*)